

RcpwB.doc

30727056

June 2004

1.0 GENERAL

RCPW (Remote Configuration Package for Windows) runs on a PC and communicates via an interface adaptor to enable re-programming and interrogation of the transmitter.

2.0 POWER SUPPLY

Check that the power supply is the correct voltage for your country.

3.0 CONFIGURATION

A programming kit package is available containing all the accessories to facilitate programming the transmitter straight away. The full contents are as follows :

- The configurator for connection between the PC and the mA signal of the transmitter.
- Power supply unit with output 24VDC,150mA for connection to mains
- RCPW installation disk
- Instructions (this document)
- Transmitter to configurator connection cable

3.1 PC Installation of RCPW

Minimum PC operating system: Windows™ 3.1

Minimum PC requirement: IBM® compatible 386 or above with 4MB ram and available serial port.

Insert the "RCPW" disk into your PC and run a:\Setup

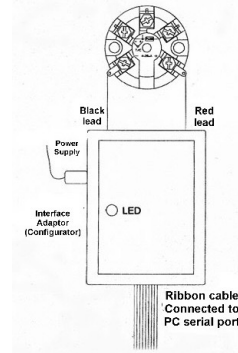
Installation directory for the storage defaults to c:\RCPW which can be amended. Icons are automatically created to run RCPW and to uninstall.

3.2 Connection using Configuration Module

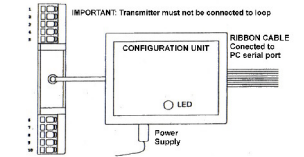
When configuration is made using an existing loop, the loop power supply must be capable of supplying 30mA and the load resistor chosen so that at least 10V remains across the transmitter, taking into account all other volt drops within the loop.

There are two possible methods of connecting the PC to the transmitter as below.

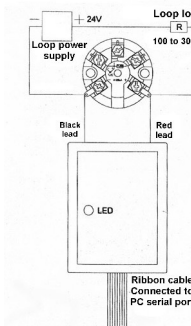
Configuration Powered Programming



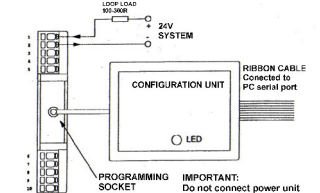
Programming using Configurator Power



Configuration In-Loop Programming



Programming using Loop Power



WARRANTY

The instruments are warranted against defective materials and workmanship for a period of three years from date of delivery.

If a product appears to have a defect or fails during the normal use within the warranty period, please contact the distributor from which you purchased the product.

This warranty does not apply to defects resulting from action of the buyer such as mishandling or improper interfacing.

The liability under this warranty shall extend only to the repair of the instrument. No responsibility is assumed by the manufacturer for any damage which may result from its use.

KOSMOS SERIES

4.0 PROGRAMMING

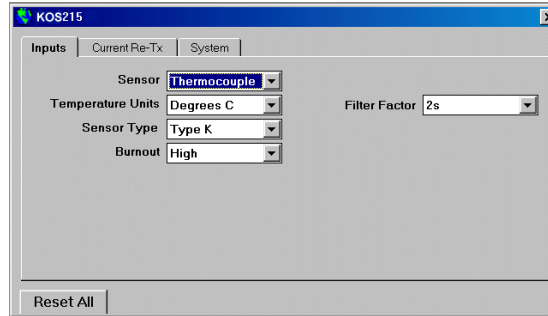
4.1 Menu Structures

RCPW contains the following menus: File, View, Options, Devices and Help. These options can be selected with the mouse or by simultaneously depressing <ALT> and the letter underlined as above. Once a menu option has been selected, the status bar shows a brief description of the functions which are as follows :



FUNCTION	DESCRIPTION
File	
<u>N</u> ew	Create a new device template
<u>O</u> pen	Open an existing template
<u>C</u> lose	Close template
<u>S</u> ave	Save template
<u>S</u> ave as	Save template as...
<u>P</u> rint	Print the active document
<u>P</u> rint preview	Preview the active document
<u>P</u> rint setup	Setup options for printing
<u>E</u> xit	Exit RCPW
View	
<u>T</u> oolbar	Show or hide the toolbar
<u>S</u> tatus bar	Show or hide the status bar
Options	
<u>S</u> et Password	Set or change the password
<u>E</u> nable Password	Enable or disable the password
<u>S</u> et comm port	Choose serial comms port
<u>E</u> nable config Verification	Enable verification of parameters
<u>S</u> et <u>N</u> etwork Mode	Set network to single or multi device
Devices	
<u>S</u> can Devices	Scan for devices on the network
<u>C</u> onfigure	Configure device with template
<u>R</u> ead	Read device parameter into template
<u>M</u> odify Device Address	Modify the address of a device
<u>M</u> onitor	Monitor devices
Help	
<u>H</u> elp	Detailed help
<u>A</u> bout	Program information, version, copyright

Template example is shown below, fields automatically update when changing sensor type etc.



Templates can be loaded/saved and upload/downloaded using the function list or icons from the previous page.

4.2 Programming instructions

Please take the following into account:

- A) Decimal numbers: the . (decimal point) is to be used
- B) The parameters uploaded to the transmitter will over-write the previous settings.
- C) The Help menu gives further information about the program functions
- D) When using configuration module connected to the normal measuring loop (as 3.2b) caution has to be taken for the following:
 - The loop supply unit must be able to deliver 32mA continuously.
 - The load resistance at the loop current 32mA must not cause the voltage drop across the transmitter to become less than 10V
 - The load resistance has to be at least 250Ω.

The 32mA in the mA-loop will be drawn directly when the configurator is connected. Make sure that alarms and trip are deactivated.

To get started:

- a) Connect the unit as shown in figure
- b) Read the actual configuration (setup status) of your connected transmitter by clicking in the read button.
- c) After a successful reading the template box will appear as shown above. You may now amend fields as necessary.

4.3 Troubleshooting

- a) Re-check the connections and electrical conditions.
- b) Check the chosen transmitter type and comms protocol:
 - Choose File,New and correct the transmitter type the software expects to communicate with.
 - Check comms protocol: Select "Options" and "Set network mode", select "Single Device Mode" and check that communication protocol is marked for the connected transmitter.

4.4 Some usefull Hints

With Output adjustment you can adjust both the output and input range. Note that the software will recalculate the given data to a new input range that matches the standard output range 4-20mA.

Sensor Offset: e.g. 0.1 means that a 0.1°C is all the time added to each measured value. The values shown in the monitor function are not affected by the given Sensor Offset value.

To Save a configuration means to store it as a file. When a file is opened remember that the file format may be different for different type of transmitters.

DISEÑOS Y TECNOLOGIA, S.A.

Polígono Industrial Les Guixeres
C/ Xarol 8 C
08915 BADALONA-SPAIN
Tel : +34 - 93 339 47 58
Fax : +34 - 93 490 31 45
E-mail : dtl@ditel.es

www.ditel.es